

Bursa Top 20: Who's The Most Charitable?

METHODOLOGY AND GLOSSARY

Bursa Top 20: Who's The Most Charitable?

We would like you to know:

#1: All information published on the 'Bursa Top 20: Who's The Most Charitable?' site are sourced from publicly available Annual and/or Sustainability reports for Year 2021 (companies have different reporting period) published between 2020 and 2021. The links to the original specific reports are found in individual company profiles. Wiki Impact PLT is not responsible for any errors, mis-reporting or inaccuracy found in the reports.

#2: Certain initiatives, activities and programmes have been categorised under main giving themes such as 'Education', 'Healthcare', 'Disaster Relief', etc. based on discretion and the Giving Framework.

#3: Wiki Impact PLT is not liable for any damages arising in contract, tort or otherwise from the use of or inability to use this site or any material contained in it, or from any action or decision taken as a result of using the site. Wiki Impact PLT shall not be responsible for any decisions made based on information published on this site.

Bursa Top 20: Who's The Most Charitable?

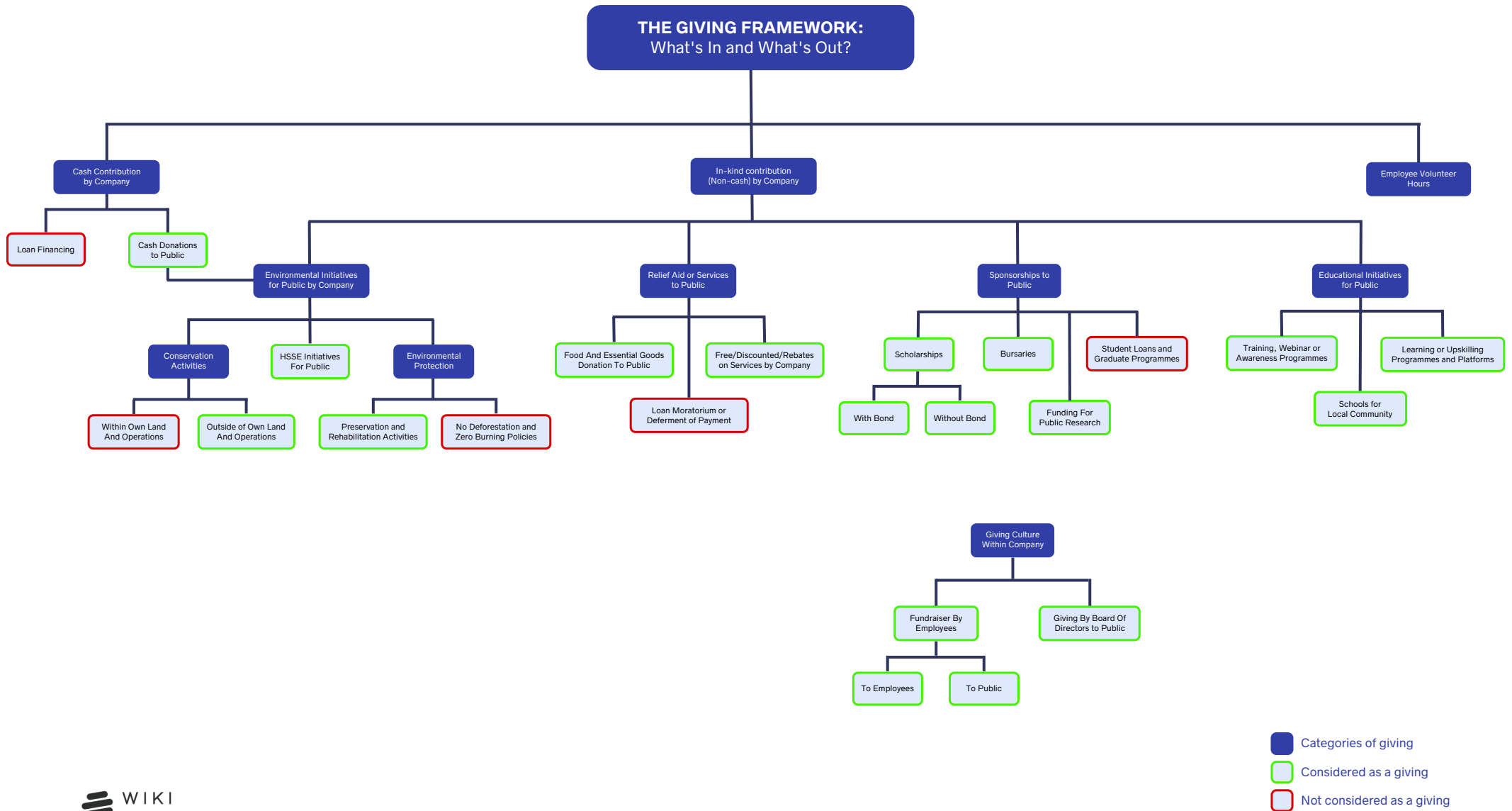
Our Process



Throughout this process, Wiki Impact constantly engaged with [vCFOur](#), a finance consulting firm to provide feedback towards the methodology and giving framework.

Bursa Top 20: Who's The Most Charitable?

The Giving Framework: What's In and What's Out?



Bursa Top 20: Who's The Most Charitable?

Glossary

Term	Definition
Cash giving	A monetary form of donation
In-kind giving	Forms of donations in goods or services instead of cash such as donations of essential goods or medical supplies to beneficiaries
Environmental initiatives	Initiatives made for the protection or conservation of the environment
Employee Volunteer Hours	The total volunteer hours and value from company employees involved in any form of initiative or giving, according to the volunteering value formula calculation Volunteering value = Average Hourly Rate x Total Volunteering Hours
By company	This form of giving is contributed from the company's earnings
To public	This form of giving is contributed to the public community which does not include employees, family members of employees, customers or suppliers
HSSE initiatives	Health, safety, security and environment initiatives such as fire prevention initiatives for the benefit of the local community
Outside of Own Land or Operations	Conservation activities are executed outside of land owned or company operational activities
Giving Culture Within Company	Any form of giving that is contributed personally by employees of the company including board of directors to the public or to their own employees
Fundraiser by employees	A voluntary financial contribution gathered by employees of a company and given back to needy employees or the public community.

Bursa Top 20: Who's The Most Charitable?

Glossary

Term	Definition
Loan moratorium	An authorized period of time delaying payment of money due on loan given by a financial institution
Loan financing	A sum of money borrowed from a financial institution which has to be paid back with interest within a period of time
Matching grant	A sum of money provided by the government to match the original fund raised
Bursaries	A monetary sum made in aid to a student in support of their education at respective institutions, when they might not otherwise be able to afford
Public research	Collaborative research and development activities with results that are publicly available and benefits the wider society
Preservation activities	Activities that protect natural resources and the environment
Conservation activities	Management and restoration of natural resources and the environment
No deforestation policy	A principle of action adopted by an organization that prohibits the clearance or conversion of a forest
Zero burning policy	A principle of action adopted by an organization that prohibits open burning
Scholarships with bond	A monetary sum awarded to support a student's education, whereby the recipient will be required to work for the scholarship provider for a certain period of time, otherwise, they may be required to repay the scholarship amount received