

# **SPOTLIGHT ON POVERTY**

PERLIS



WIKI  
IMPACT

# TABLE OF CONTENTS

Introduction	1
Spotlight on Poverty	2
Perlis in General	3
Employment	4
Gross Output	5
Basic Amenities	6
Education: Primary	7
Education: Secondary	8
Healthcare	9
Internet and Connectivity	10
Definitions	11-12
References	13

Eradicating poverty remains one of the biggest challenges facing humanity today and the primary focus of Wiki Impact's Poverty Project.

Out of the 17 United Nations Sustainable Development Goals (SDG), 'No Poverty' is the first. The stakes are high, human lives are on the line. It is of utmost importance that together, as a nation, state and community, work together to eliminate poverty.

**End poverty in all its forms, everywhere.**



We usually associate poverty with a lack of money – not being able to afford to put food on the table or having a roof over your head. While poverty definitely includes not being able to meet basic needs including meals, clothing and shelter, it is also about so much more than that.

*"Fundamentally, poverty is a denial of choices and opportunities, a violation of human dignity. It means lack of basic capacity to participate effectively in society. It means insecurity, powerlessness and exclusion of individuals, households and communities."* United Nations, 1998

Let us restore human dignity, give back voices to people and provide opportunities where everyone can not only survive, but thrive.

Spotlight on Poverty is a series that aims to highlight the needs and gaps in the poorest districts of every state in Malaysia.

## What's in this report?

This comprehensive report will give you grand overview of how the district is fairing. Poverty is a complex and interconnected issue that impacts on other issues of society.

The report will cover the following:

- Socio economic overview
- Employment
- Basic Amenities
- Education (Primary and Secondary)
- Healthcare
- Internet & Connectivity

## How can this report be used?

If you're a changemaker (NGO, association, government led initiative, social investor) that is involved in alleviating poverty, this data will help you to make impactful and informed decisions on where to channel and focus your resources and efforts.

The data will also help policy makers and communicators better understand the state of poverty in these districts.

Let's work together to give a voice to the voiceless.



# SPOTLIGHT ON POVERTY:

## PERLIS

Perlis or Perlis Indera Kayangan is the smallest state in Malaysia measuring 819 square kilometres. It is positioned at the northern part of the west coast of Peninsular Malaysia bordering the Satun and Songkhla Provinces. Perlis's capital is Kangar while its royal capital is Arau.

According to Malaysian history, the name Perlis originated from the Thai phrase "Phrao Loi" which meant coconut washed ashore. This was because there were many coconuts found washed ashore around Kuala Perlis. Locals began shortening the phrase and that was how "pereleh" or Perlis came to be. Although Perlis is not divided into administrative districts, it still has several communes or 'mukims'.



Image: Sanglang Jetty, Perlis

Kuala Perlis is a well-known fishing spot as enthusiastic anglers would head over to fish. Fishing competitions are also usually held in Kuala Perlis. On top of that, there is an abundance of seafood restaurants that offer fresh seafood for a relatively cheap price compared to the city centre.

The Perlis State Park is also another tourist attraction site, home to Gua Kelam and Gua Wang Burma. It sits on the country's longest limestone hills range called the Nakawan Park. The park spans about 5000 hectares with two reserve parks within the area — Mata Ayer and Wang Mu Forest Reserves.





## PERLIS IN GENERAL

*Brief overview of the population & poverty in Perlis*



**Population Size Perlis (2019)**  
Constitutes of **0.80%** of Malaysia's population



**Monthly Household Income (Median)**  
**12.8%** less than Malaysia (RM5,873)



**GINI Coefficient**  
Compared to Malaysia's **0.407**



**Incidence of Absolute Poverty<sup>1</sup>**  
Compared to Malaysia's **5.6%**



**Incidence of Relative Poverty**  
Compared to Malaysia's **16.9%**

**Ethnic Composition:**

**224,600**  
Bumiputeras

**20,000**  
Chinese

**3,300**  
Indians

**5,300**  
Others

**8,700**  
Non-Citizens



## EMPLOYMENT

PAGE 04

*The Employment Situation in Perlis***96.7%**

Employment Rate  
in Perlis (2019)

**3.3%**

Unemployment  
Rate  
Compared to  
Malaysia's **4.7%**

**61.3**  
('000)

Persons Outside  
the Labour Force  
Out of population  
total in Perlis

**112.2**  
('000)

Persons in the  
Labour Force  
Out of population  
total in Perlis

**108.5**  
('000)

Persons  
Employed  
Out of the **112.2**  
persons in the  
labour force

**3.7**  
('000)

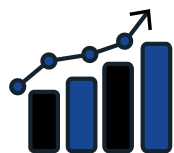
Persons  
Unemployed  
Out of the **112.2**  
persons in the  
labour force

## OBSERVATIONS

The unemployment rate in Perlis is relatively low when compared to the national rate. This meant that a large majority of the people of Perlis are employed.

Looking at the number of employed persons, almost 97% of the total labour force are employed, leaving the remaining 3% unemployed.





## GROSS OUTPUT

PAGE 05

*An Insight on the Economic Output in Perlis***5,884**

Total Gross Output  
Value  
(RM Million)

**RM  
466  
mil.**

Manufacturing  
7.9% of the Total  
Gross Output Value

**RM  
3879  
mil.**

Service  
65.9% of the Total  
Gross Output Value

**RM  
1,262  
mil.**

Agriculture  
21.4% of the Total  
Gross Output Value

**RM  
146  
mil.**

Construction  
2.4% of the Total  
Gross Output Value

**RM  
33  
mil.**

Mining and  
Quarrying  
0.5% of the Total  
Gross Output Value

## OBSERVATIONS

The majority of the economy in Perlis is dominated by the **service sector**, followed by the agricultural sector which makes up 21.4% of the total output value.

At 65.9%, the service sector in Perlis makes up for more than half of the total gross output value, making it the most profitable industry in the state.



## BASIC AMENITIES

PAGE 06

*Available utilities and amenities for the population*

**100%**

### ELECTRICITY SUPPLY

100% for all of  
Malaysia

**99.6%**

### PIPED WATER IN THE HOUSE

Compared to  
**95.9%** for Malaysia

**0.3%**

### PUBLIC WATER STAND PIPE

Compared to **0.4%**  
for Malaysia

**0.1%**

### OTHERS

Compared to **3.7%**  
for Malaysia

---

## GARBAGE COLLECTION FACILITY

**15.7%**

### NONE AVAILABLE

Compared to 8.2%  
for Malaysia

**38.4%**

### WITHIN THE AREA\*

Compared to 22.9%  
for Malaysia

**45.9%**

### LIVING QUARTERS

Compared to 68.9%  
for Malaysia

\*Garbage collection in the collection area where the distance is more than 100 metres away from the living quarters

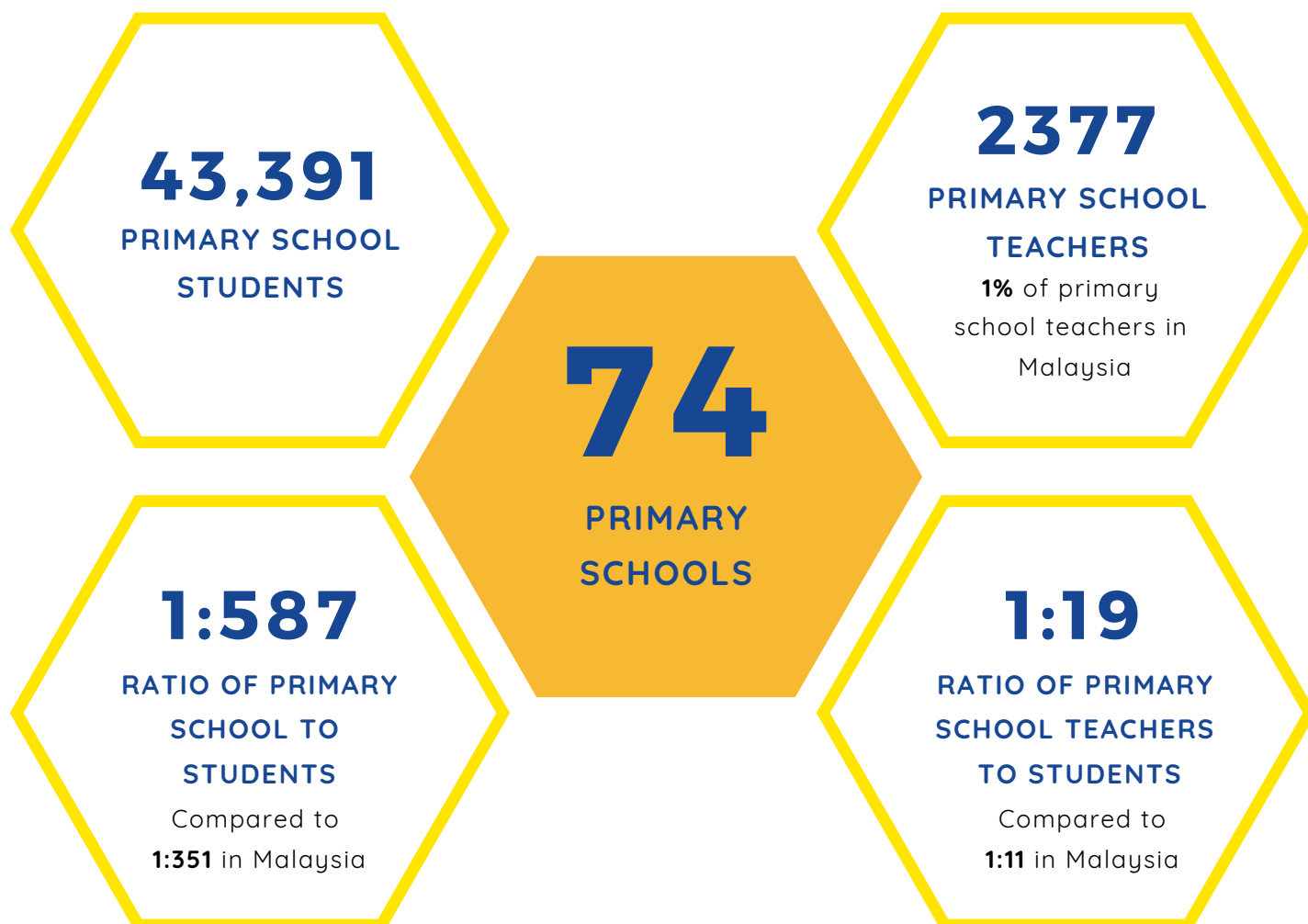




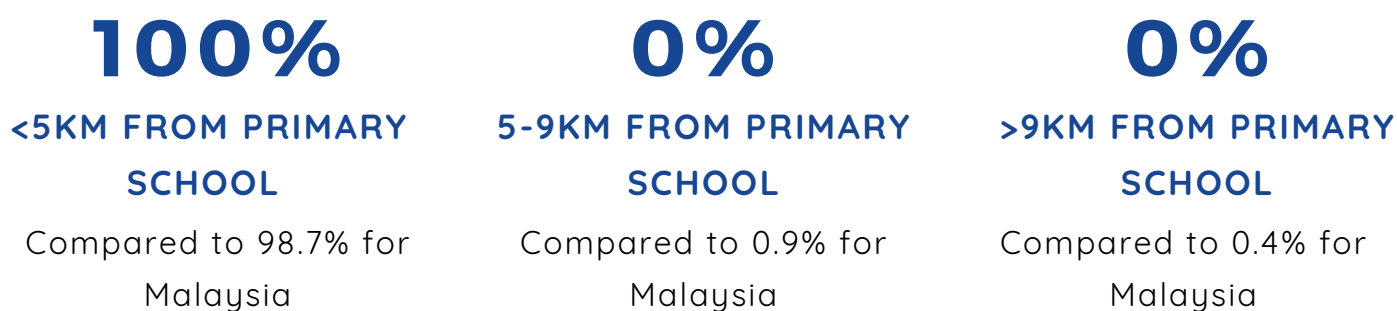
## EDUCATION: PRIMARY

PAGE 07

*An overview on the state of primary school education in Perlis*



## HOUSEHOLD DISTANCE FROM SCHOOL

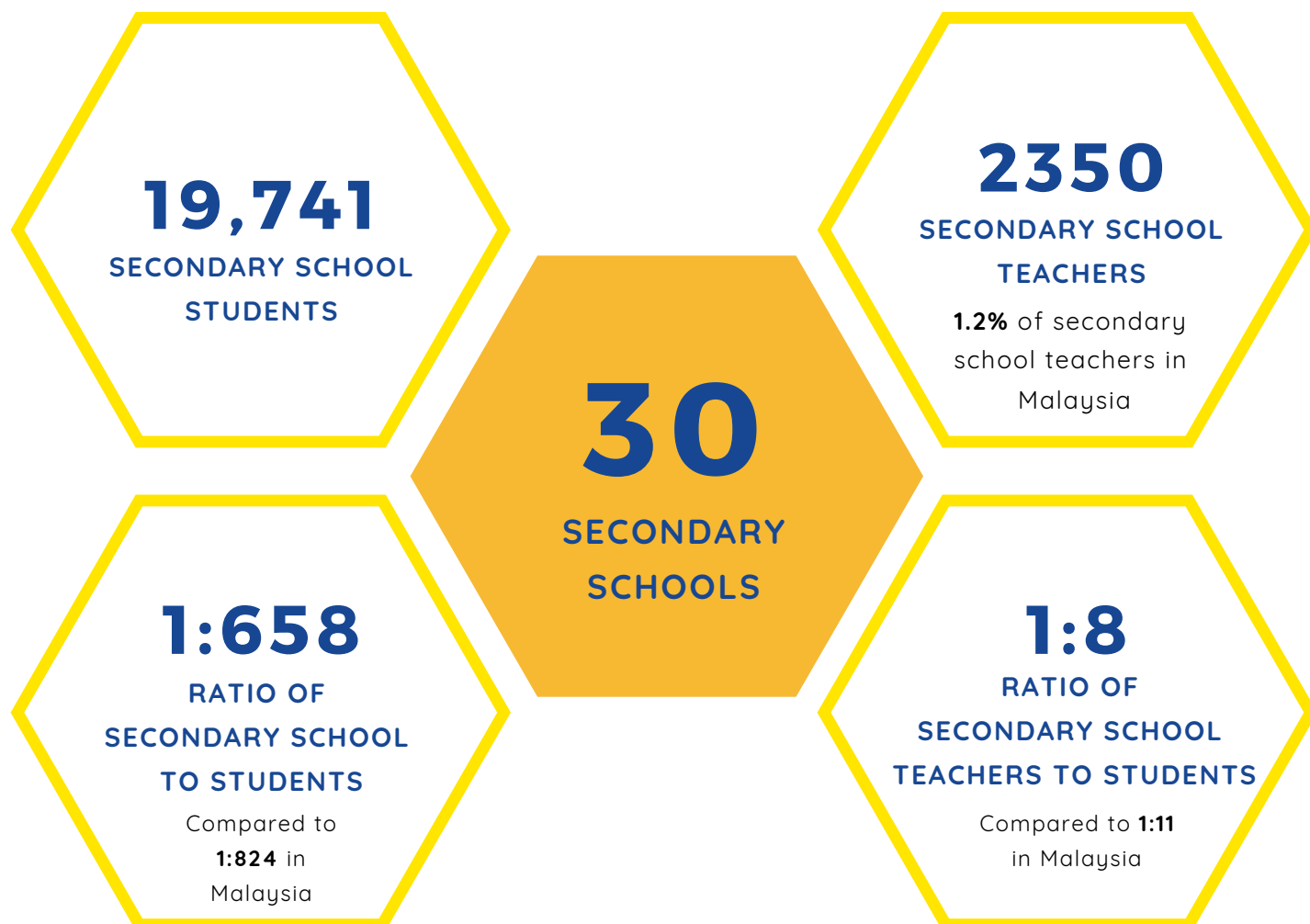




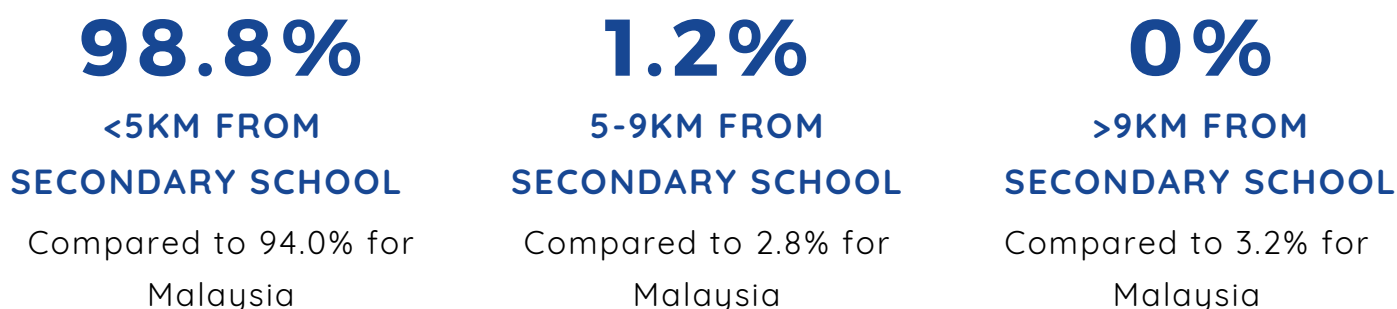
## EDUCATION: SECONDARY

PAGE 08

*An overview on the state of secondary school education in Perlis*



## HOUSEHOLD DISTANCE FROM SCHOOL







## HEALTHCARE

PAGE 09

*Available government healthcare facilities***1****Public Hospitals****1****Private Hospitals****44****Government Clinic(s)****552****Beds****1:474****Ratio of beds to  
population**Compared to  
**1:710** in Malaysia

### OBSERVATION:

With only one public hospital and one private hospital, Perlis may be able to provide enough bed space in an event of a pandemic breakout. However, more severe medical cases may require referral to hospitals in Kedah when specialists are needed.

---

## HOUSEHOLD DISTANCE FROM PUBLIC HEALTHCARE CENTRES

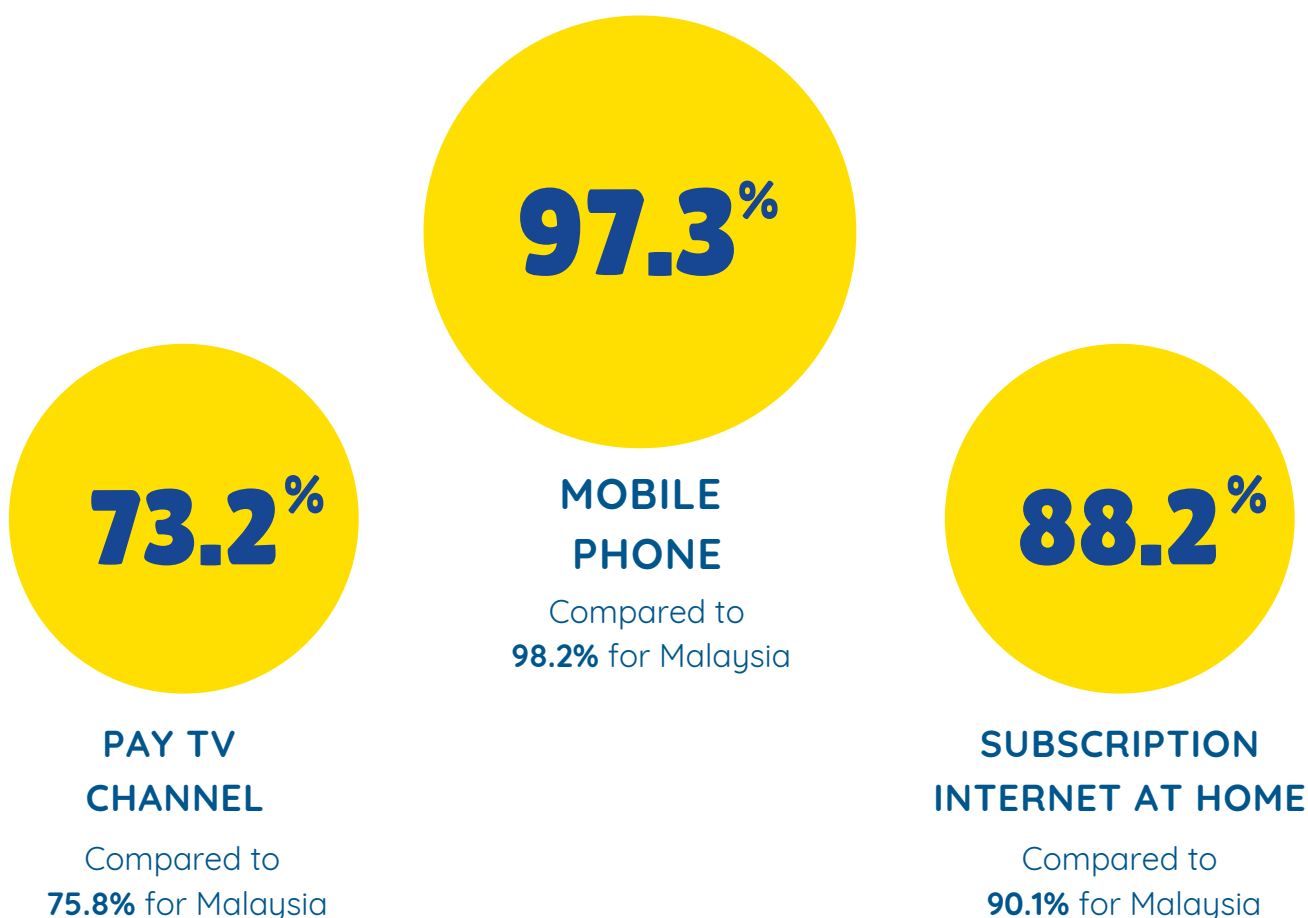
**99.3%****<5KM FROM FACILITY**Compared to 92.6% for  
Malaysia**0.7%****5-9KM FROM FACILITY**Compared to 4.5% for  
Malaysia**0%****>9KM FROM FACILITY**Compared to 2.9% for  
Malaysia



## INTERNET & CONNECTIVITY

PAGE 10

*Internet penetration and accessibility in Perlis*



*People and organisations making a difference*

## **Pusat Dialisis Tuanku Syed Putra — NKF**

This dialysis centre provides affordable treatment to the poor patients in Perlis suffering from end-stage kidney failure. They are the sole NGO Dialysis Centre in Perlis.

Phone Number: 04-977-7411

Website: <https://pdtsp-nkf.org>

E-mail: [kgr\\_nkf@yahoo.com](mailto:kgr_nkf@yahoo.com)

---

## *An explanation of the terminologies used in this Spotlight*

**Absolute poverty-** "The most severe type of poverty where there is a severe deprivation of basic human needs, including food, safe drinking water, sanitation facilities, health, shelter, education and information. It depends not only on income but also on access to services." (UN 1995 report of the World Summit for Social Development)

**Relative Poverty-** It is when impoverished households earn 50% less than the national median household incomes. This means that the household does have money, however they do not have enough money to afford anything other than the basics. This type of poverty is also dependant on the economy of the country, and as such is subject to change from time to time.

**GINI Index-** It is defined as the measure of statistical dispersion intended to represent the income inequality within a nation. It is calculated using a specific formula and the results determines the different levels of income inequality.

GINI Index:

- $<0.2$  = perfect income equality
- $0.2-0.3$  = relative equality
- $0.3-0.4$  = adequate equality
- $0.4-0.5$  = big income gap
- $>0.5$  = severe income gap

The bigger the number of the GINI index, the more severe the income inequality. Anything less than 0.2 represent perfect income equality, while anything higher than 0.5 represents a severe income inequality. Any number between 0.2 and 0.3 is considered an adequate safe value. A value of 0.4 is considered the warning level that immediate action must be taken to reduce income inequality.

---

*An explanation of the terminology used in this Spotlight*

**Labour force-** It represents the group of people in the population that are currently actively looking for work, or already working.

**Outside labour force-** Refers to the group of people that are not actively looking for work. Example : Pensioners, school children, infants, and housewives.

**Employed force-** The group of people within the population that are currently working for pay at least one hour per week.

**Unemployed force-** The group of people within the population that are currently able and looking for work, but not yet hired.

**Gross output-** "The total output of a firm, industry, or economy without deducting intermediate costs." (Collins Dictionary)

This means that the Gross Output of an industry is the immediate value of their output/sales, without taking into account the cost of labour and production.



*A list of all the sources used to gather data and information*

1. Malaysia, Department of Statistics. (2019). LAPORAN SURVEI PENDAPATAN ISI RUMAH DAN KEMUDAHAN ASAS MENGIKUT NEGERI DAN DAERAH PENTADBIRAN: PERLIS.
  2. Department of Statistics Malaysia. (2019). Penemuan Utama Malaysia.
  3. Perlis. (2021). Retrieved from Department of Statistics Malaysia Official Portal ([dosm.gov.my](https://dosm.gov.my))
  4. Employment - Labour force - OECD Data. (n.d.). Retrieved from <https://data.oecd.org/emp/labour-force.htm>
  5. Extreme poverty. (n.d.). Retrieved from [https://en.wikipedia.org/wiki/Extreme\\_poverty](https://en.wikipedia.org/wiki/Extreme_poverty)
  6. Gini coefficient. (n.d.). Retrieved from [https://en.wikipedia.org/wiki/Gini\\_coefficient](https://en.wikipedia.org/wiki/Gini_coefficient)
  7. Gross output definition and meaning: Collins English Dictionary. (n.d.). Retrieved from <https://www.collinsdictionary.com/dictionary/english/gross-output>
  8. Relative vs Absolute Poverty: Defining Different Types of Poverty. (n.d.). Retrieved from <https://www.habitatforhumanity.org.uk/blog/2018/09/relative-absolute-poverty/>
-



Wiki Impact is an online platform dedicated to the impact industry. We share stories and data on issues that matter, highlighting impact-driven organizations and changemakers on the ground. Now, everyone can experience the impact industry, get data to give effectively, and bring more fulfilment and purpose to life.

[wikiimpact.com](http://wikiimpact.com)